

# REMINGTON®

## Kreatin Protect Volume and Smooth Brush



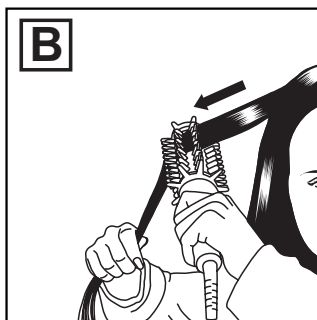
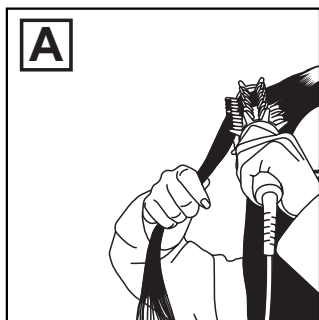
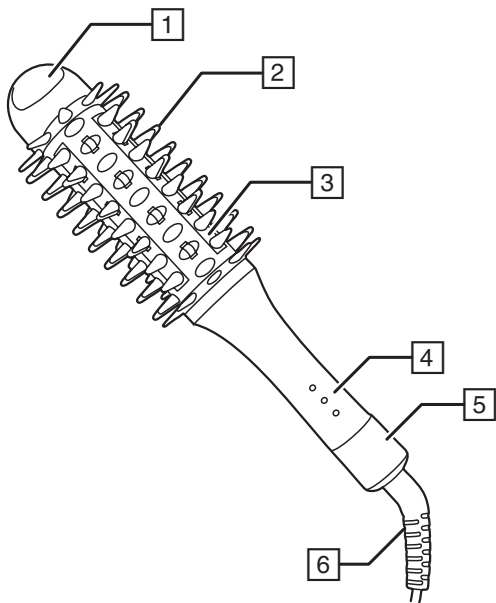
**CB7A136**

 [www.remington.co.uk](http://www.remington.co.uk)

**Register online for £10,000 prize draw**  
**EXTRA year guarantee FREE rewards gallery**

Visit [www.remington.co.uk/productregister](http://www.remington.co.uk/productregister). You must register within 28 days of purchase.






Thank you for buying your new Remington® product. Please read these instructions carefully and keep them safe. Remove all packaging before use.

**WARNING: This appliance is hot. Keep out of reach of children at all times.**

---

## IMPORTANT SAFEGUARDS

---

- This appliance can be used by children aged from 8 years and above and persons with reduced physical, sensory or mental capabilities or lack of experience and knowledge if they have been supervised/instructed and understand the hazards involved. Children shall not play with the appliance. Cleaning and user maintenance shall not be done by children unless they are older than 8 and supervised. Keep the appliance and cable out of reach of children under 8 years.
-  Do not use this appliance near bathtubs, showers, basins or other vessels containing water.
- When the appliance is used in a bathroom, unplug it after use since the proximity of water presents a hazard even when the appliance is switched off.
- For additional protection, the installation of a residual current device (RCD) having a rated residual operating current not exceeding 30 mA is advisable in the electrical circuit supplying the bathroom\*.  
\* Currently, the fitting in a bathroom of an electrical socket suitable or capable of operating the appliance is not permitted in the UK (see BS7671).
- Burn hazard. Keep the appliance out of reach from young children, particularly during use and while cooling down.
- Always place the appliance with its stand, if any, on a heat-resistant, stable flat surface.
- Never leave the appliance unattended when it is connected to the power supply.

- If the supply cord of this unit becomes damaged, discontinue use immediately and return the appliance to your nearest authorised Remington® service dealer for repair or replacement in order to avoid a hazard.
- Do not allow any part of the appliance touch the face, neck or scalp.
- Keep the power plug and cord away from heated surfaces.
- Do not use attachments other than those we supply.
- Do not twist or kink the cable, or wrap it round the appliance.
- Do not use the appliance if it is damaged or malfunctions.
- This appliance is not intended for commercial or salon use.
- WARNING: Contains traces of nuts.

---

## **PARTS**

---

- |  |   |
|--|---|
| 1. Cool tip  | 5. Combined temperature control and on/off switch |
| 2. Heated ceramic coated bristles                            | 6. Swivel cord                                    |
| 3. Heated ceramic barrel infused with Keratin and Almond oil | 7. Heat resistant mat (not shown)                 |
| 4. Temperature display lights                                | 8. Heat resistant glove (not shown)               |

---

## **ADDITIONAL FEATURES**

---

- Fast heat up—ready to use in 30 seconds.
- Automatic safety shut off – this unit will switch itself off if no button is pressed or it is left on after 60 minutes.
- Multivoltage: for home or abroad. At 120V times and temperatures may vary.

---

## **INSTRUCTIONS FOR USE**

---

- Before use, ensure the hair is clean, dry and tangle-free.
  - For extra protection use a heat protection spray.
  - Hairsprays contain flammable material - do not use while using this product.
  - Section the hair prior to styling. Style the lower layers first.
  - Use the heat resistant glove to avoid any accidental burns.
1. Plug in the brush.
  2. Twist the combined temperature control and on/off switch to turn on and select your desired temperature setting. These are indicated by the lights on the handle.
  3. The selected temperature light will flash continuously until the desired temperature setting is reached.

## Recommended Temperatures

Temperature	Hair type
150°C (low)	Thin/fine, damaged or bleached hair.
190°C (medium)	Normal, healthy hair
230°C (high)	Thick and difficult to style hair

### To create volume and straighten:

1. Place the brush at the root of the hair and wrap a section of the hair over the barrel (FIG A).
2. Hold the brush in place for 10 seconds to provide volume at the roots.
3. Hold the end of the section taut, keep the hair wrapped around the barrel and glide the brush down the entire length of the hair, rotating slightly (FIG B).
4. For best results, ensure each section of hair gets deep into the inner areas of the ceramic bristles as the heat needs to be applied to the hair in order to style.

### Polished ends and Flick Outs

1. Take a section of hair and wrap the end around the barrel, either wrapping under for polished end or outwards for flick outs.
2. Keeping the ends wrapped around the barrel, slowly rotate the brush to shape the style.

---

## AFTER USE

---

- After use, turn the appliance off and unplug.
- Let the appliance cool down before cleaning and storing away.

---

## CLEANING AND MAINTENANCE

---

- Unplug the appliance and allow to cool.
- Wipe all the surfaces with a damp cloth.
- Don't use harsh or abrasive cleaning agents or solvents.

---

## RECYCLING

---



To avoid environmental and health problems due to hazardous substances, appliances and rechargeable and non-rechargeable batteries marked with one of these symbols must not be disposed of with unsorted municipal waste. Always dispose of electrical and electronic products and, where applicable, rechargeable and non-rechargeable batteries, at an appropriate official recycling/ collection point.

---

## SERVICE AND GUARANTEE

---



Defects affecting product functionality appearing within the guarantee period will be corrected by replacement or repair at our option provided the product is used and maintained in accordance with the instructions.

Your statutory rights are not affected.

Consumables are excluded.

Defects from repair by an unauthorized dealer are not covered.

If you call the Service Centre, please have the model number to hand, as we won't be able to help you without it. The model number can be found on the rating plate of the appliance.


Replacement parts and accessories are available to buy at [www.remington.co.uk/parts-accessories](http://www.remington.co.uk/parts-accessories)


---

## SERVICE CENTRE

---

### United Kingdom

 Tel 0800 212 438 (free call mainland UK)

 +44 161 947 3111 (call outside the UK)

Spectrum Brands (UK) Ltd

Fir Street, Failsworth, Manchester

M35 0HS, UK

[www.remington.co.uk](http://www.remington.co.uk)

### Ireland

 Tel 142 951 40

Remington Consumer Products,

Unit B12, Ballymount Corporate Park,

Ballymount, Dublin 12.

[www.ie.remington-europe.com](http://www.ie.remington-europe.com)

---

## REGISTER ONLINE FOR

---

£10,000 prize draw, EXTRA year guarantee, FREE rewards gallery.

Visit [www.remington.co.uk/productregister](http://www.remington.co.uk/productregister). You must register within 28 days of purchase.

## **Ref. No. CB7A136**

18/UK/ CB7A136 T22-7000101B Version 02 /18

CB7A138

Remington® is a Registered Trade Mark of Spectrum Brands, Inc., or one of its subsidiaries.

Spectrum Brands (UK) Ltd

Fir Street,

Failsworth,

Manchester

M35 0HS

[www.remington.co.uk](http://www.remington.co.uk)

© 2018 Spectrum Brands, Inc.